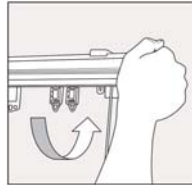


INSTALLATION

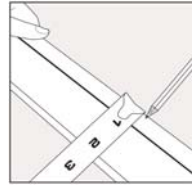
Proper installation is necessary for the operation and safety of these systems. For satisfactory performance, we highly recommend the EasyPull™ Traverse System be installed by a professional installer.



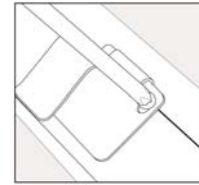
Using a level, install the brackets to the wall with screws and anchors provided



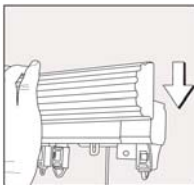
Snap the track into the brackets



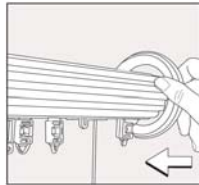
Measure and mark back of pole fascia for proper fascia track clip placement



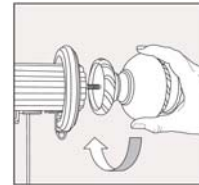
Attach the fascia track clips with screws provided



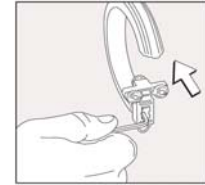
Slide pole fascia onto track



Traverse with rings; install rings into glides and master carriers



Install finials

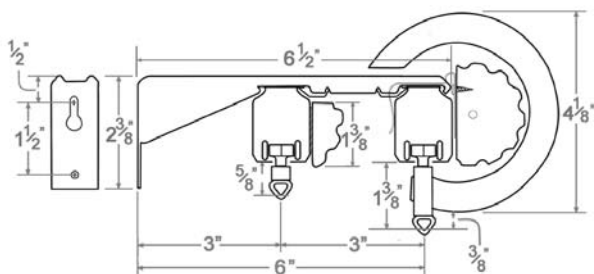


Ring removal tool may be used to remove rings

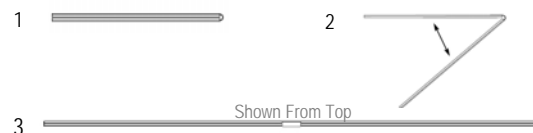
Note: Track may be cut down as follows; for One-Way, 3" maximum from cord pull side only and for Center Draw, 3" maximum equally from each end for a total of 6", see instructions sheet.

SPECIFICATIONS

Measurements



Installation of Spliced Track System



1. Remove from packaging
2. Unfold end-to-end
3. Remove plastic cord protectors
4. Slide splicing connector over the spliced seam

Note: The track will be pre-corded with glides and master carriers for your convenience.